

CONSULTATION on PROPOSALS

FOR A

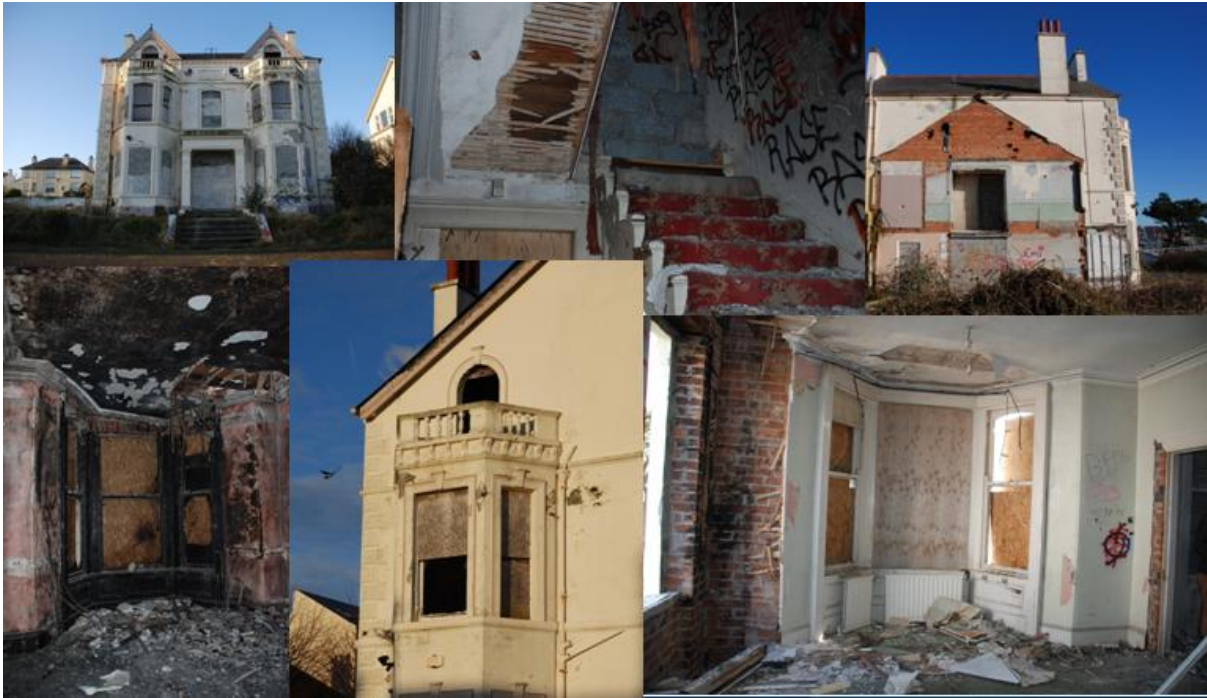
HISTORIC ENVIRONMENT FUND

March 2016

Historic Environment Division

Proposals for Consultation





Princetown Road- before conservation works



Princetown Road- after conservation works

Front cover

Tievealough Abbey interior east window before conservation works. Following consultation, the Abbey was conserved through a management agreement with a local community group 'Friends of Tievealough Abbey [see pages 45-46]

Contents

MINISTER'S FOREWORD	3
CONSULTATION DETAILS	4
EXECUTIVE SUMMARY	9
1 THE PROPOSAL FOR AN HISTORIC ENVIRONMENT FUND	11
2 HISTORIC ENVIRONMENT FUND strategic areas for funding	15
3 HERITAGE RESEARCH	16
4 HERITAGE REGENERATION	18
5 HERITAGE REPAIR	22
6 HERITAGE REVIVAL	28
7 SUPPLEMENTARY MATTERS	31
8 BIBLIOGRAPHY	39
ANNEX: LIST OF QUESTIONS	41



Ballydugan Mill and chimney

MINISTER'S FOREWORD



Our heritage is key to our identity and sense of place in the world. As Minister of the Environment I have a responsibility to protect and enhance the historic environment and in doing so my Department contributes significantly to the wider economy, public health and wellbeing, tourism, education, regeneration and to community life. The protection, maintenance and utilisation of our wealth of historic buildings and monuments is key to this.

Given the significant reduction in funds available to my Department to support current initiatives in this sector, I have asked that consideration be given to the provision of an Historic Environment Fund. This is the purpose of this consultation - to seek your views as stakeholders on if and how we should contribute to the funding of the access, enjoyment, protection and promotion of our historic environment.

The aim of these proposals is to seek to develop a fund which addresses the full range of support that the Department can offer to help the historic environment. The deployment of these will be dependent on available budget but I hope that the approach will provide a clear framework for the decisions taken in the future.

I encourage you to consider these proposals carefully and take an active role in shaping the future funding mechanisms for our finite heritage assets.

CONSULTATION DETAILS

In this consultation document the Historic Environment Division of the Department of the Environment (“the Department”) sets out proposals on the framework for a proposed Historic Environment Fund. During the twelve week consultation period, the Department of the Environment’s built heritage functions will be transferred to the Department for Communities. This will not affect the consultation.

The purpose of this consultation is to seek the views of all interested parties on the Department’s proposals. The consultation will run for twelve weeks. The Department will give due consideration to all responses and a synopsis of responses will be published as soon as practicable following the consultation period.

Additional copies of this consultation document may be made without seeking permission. This document is also available in alternative formats; please contact us to discuss your requirements. The document is published on the Department’s website.

If you have any queries regarding this consultation please contact the Heritage Advice and Regulation team by e-mail, by post to the address below or by telephone through our enquiries line on 028 9082 3126/ 028 9082 3177.

How to Respond

Early responses are encouraged but all responses should arrive no later than 5pm on Monday 6 June 2016. Responses may be sent by email to historicenvironmentfund@doeni.gov.uk or by post to:

HISTORIC ENVIRONMENT FUND CONSULTATION

Historic Environment Division

6th Floor

Causeway Exchange

1-7 Bedford Street

Town Parks

Belfast BT2 7EG

When you are responding please state whether you are responding as an individual or representing the views of an organisation. Before you submit your responses please read the “Freedom of Information Act 2000 - Confidentiality of Consultation Responses” section below, which gives guidance on the legal position.

Equality Screening

Section 75 of the Northern Ireland Act 1998 requires that public authorities have due regard to equality issues in carrying out functions relating to Northern Ireland. We have completed an equality screening of the policy proposals being consulted upon and have concluded that they do not impact on equality of opportunity for any of the nine categories specified in section 75 (religious belief; political opinion; race; age; marital status; sexual orientation; men and women generally; disability; and dependants).

We have not identified any evidence of higher or lower participation or uptake by different groups; that different groups have different needs, experiences, issues and priorities in relation to the particular policy; that there is an opportunity to better promote equality of opportunity or better community relations by altering the policy or working with others in government or the community at large. Engagement with relevant groups, organisations or individuals has not indicated that particular policies create problems that are specific to them.

The Equality Commission will receive copies of this document as part of the consultation exercise. We will take into account any comments that the Commission might have.

Human Rights Act 1998

The Human Rights Act 1998 incorporates the European Convention on Human Rights (“the Convention”) and makes it unlawful for a public authority to act in a way that is incompatible with these rights. Therefore all new policies must be compliant with Convention rights.

The proposed policy will have a positive impact with regard to human health, public safety and environmental quality. The new policy will enhance rather than be detrimental to applicants' Convention rights. There is no obligation to avail of the benefits available under the new policy. The Department's view is that the policy is fully compliant with Convention rights.

The Human Rights Commission will receive copies of this document as part of the consultation. We will take into account any comments that the Commission may make.

Rural-Proofing

Rural Proofing is a process to ensure that all relevant Government policies are examined carefully and objectively to determine whether or not they have a different impact in rural areas from that elsewhere, because of the particular characteristics of rural areas. Where necessary the process should also examine what policy adjustments might be made to reflect rural needs and in particular to ensure that, as far as possible, public services are accessible on a fair basis to the rural community.

The Department has considered these policy proposals in relation to the rural community and has found no potential differential impacts.

Freedom of Information Act 2000 – Confidentiality of Consultations

The Department will publish a summary of responses following completion of the consultation process. Your response, and all other responses to the consultation, may be disclosed on request. The Department can refuse to disclose information only in exceptional circumstances. Before you submit your response, please read the paragraphs below on the confidentiality of consultations; they will give you guidance on the legal position about any information given by you in response to this consultation.

The Freedom of Information Act 2000 gives the public a right of access to any information held by a public authority (the Department in this case). This right of access to information includes information provided in response to a consultation.

The Department cannot automatically consider as confidential information supplied to it in response to a consultation. However, it does have the responsibility to decide whether any information provided by you in response to this consultation, including information about your identity, should be made public or treated as confidential.

This means that information provided by you in response to the consultation is unlikely to be treated as confidential, except in very particular circumstances.

The Lord Chancellor's Code of Practice on the Freedom of information Act provides that:

- the Department should only accept information from third parties in confidence if it is necessary to obtain that information in connection with the exercise of any of the Department's functions and it would not otherwise be provided;
- the Department should not agree to hold information received from third parties 'in confidence' which is not confidential in nature;
- acceptance by the Department of confidentiality provisions must be for good reasons, capable of being justified to the Information Commissioner.

For further information about confidentiality of responses, please contact the Information Commissioner's Office:

Tel: 028 9051 1270

Email: ni@ico.gsi.gov.uk

Website: www.informationcommissioner.gov.uk

THE CONSULTATION PROCESS AND HOW TO RESPOND

Please note that the Department of the Environment is issuing this consultation. During the period that the consultation is open, the relevant functions of the Department will transfer to the new Department for Communities. It will therefore be the responsibility of the Department for Communities to collate the responses to the consultation and take forward the proposals.

Topic of this consultation	Provision of financial assistance to the Historic Environment by way of an Historic Environment Fund
Scope of the consultation	The consultation will help inform the scope and remit of an Historic Environment Fund
	Anyone with an interest in this area is welcome to respond. The consultation is primarily aimed at those with a particular interest [including owners and custodians of listed buildings and historic monuments], conservation professionals and organizations from the field of cultural heritage protection. We would also seek to engage opinion in District Councils.
Body Responsible for the consultation	The Historic Environment Division of DOE [DfC on 9 May 2016]
Duration	The consultation will run for twelve weeks. It will begin on 14 March 2016 and will end on 6 June 2016
Enquiries	E-Mail historicenvironmentfund@doeni.gov.uk Telephone 028 9082 3177/ 028 90823126
How to respond	Please respond to the consultation to historicenvironmentfund@doeni.gov.uk Postal responses can be sent to Historic Environment Fund Consultation Historic Environment Division 6th Floor Causeway Exchange 1-7 Bedford Street Town Parks Belfast BT2 7EG
After the consultation	The views and advice expressed in responses to this consultation may be placed in the public domain. Each response will inform the Department in its planning of the Historic Environment Fund.

EXECUTIVE SUMMARY

The Historic Environment Division of DOE is responsible for the recording, conservation and protection of the built heritage in Northern Ireland on behalf of the Department. The statutory authority to provide funding for listed buildings and scheduled monuments is detailed in Articles 199 and 225 of the Planning Act (NI) 2011 and Articles 19, 23 and 24 of the Historic Monuments and Archaeological Objects (Northern Ireland) Order 1995.

Taken together this allows a wide range of potential avenues to support the Historic Environment. The following pages propose a new Historic Environment Fund that is designed to capture all of this potential.

At a workshop with key stakeholders in July 2015, however, conclusions reached were that *'the general view of the group was that the contribution which the built heritage currently makes to the economy and society was not very well understood, particularly by the high level decision makers. The importance of the built heritage, and the Department's role in managing and protecting this, needs to be better and much more strongly articulated'*.

In addition, the *Study on the Economic Value of Northern Ireland's Historic Environment* published by DOE in 2012 noted *'Although its contribution to the local economy is significant, the historic environment in Northern Ireland produces significantly lower levels of output, employment and GVA than that of its neighbouring jurisdictions, when assessed on a per capita basis. This suggests that there is significant potential to further develop the historic environment sector in NI'*.

Recognising this situation, the Minister requested that consideration be given to the creation of an Historic Environment Fund to provide strategic direction to the funding of the historic environment. It is proposed that the Historic Environment Fund 2016-2020 will encompass four key strands: Heritage Research, Heritage Regeneration, Heritage Repair and Heritage Revival. The reasons we should provide this funding, and how we can promote capacity in each of the strands, are set out in this document.

Some of the proposals identified are routes by which the Department has previously provided support in this sector, examples are: Management Agreements for Historic Monuments; selected support for publications; support for research and events; and a recasting of the listed building grant aid scheme. Others are potential funding options based upon a review of what has been successful elsewhere. Bringing these together into one place allows better clarity in regard to how the Department can support the sector and allows a consistent consideration of proposals relative to our priorities. It also reflects the feedback received from stakeholders that we should articulate the potential of the sector in a more coherent way.

The proposals are organised under four themes reflecting the scope of support and influence which Departmental funding can encourage. The themes are: 'Heritage Research'; 'Heritage Regeneration'; 'Heritage Repair' and 'Heritage Revival'.

Because Departmental budgets for coming years will not be confirmed until later this year, the consultation does not indicate the budget available to the Fund. It indicates, instead, that the application of all of these proposals will be subject to funding availability and that it may not be possible to proceed with all in a given year. The key issue is therefore the approach proposed which, by implication, is about using available budget widely rather than focusing scarce budget on a few projects. Northern Ireland's heritage has huge potential and these proposals aim to support these efforts.



Kilbroney Graveyard

1 THE PROPOSAL FOR AN HISTORIC ENVIRONMENT FUND

To support and sustain vibrant communities and a strong economy through realising the significant, ongoing value of our historic environment.

Cultural heritage is an expression of the ways of living, developed by a community and passed on from generation to generation, including customs, practices, places, objects, artistic expressions and values. Cultural Heritage is often expressed as either intangible or tangible cultural heritage [ICOMOS 2002]

The historic environment is a key component of our cultural heritage, contributing, through the archaeological heritage, architectural heritage, underwater heritage and historic landscapes to our sense of place and shared cultural identity. It enhances quality of life and adds local distinctiveness. It is an important economic and social asset. It is therefore vital that our historic environment is appreciated, protected and made accessible to present and future generations.

The historic environment can be used to the benefit of local communities with very significant economic, social and environmental benefits. The core of Historic Environment Division's work is to seek to realise this value and to encourage best practice. We do this by working in partnership with many organisations and individuals, seeking to encourage those that are doing things well, and to seek to enforce against those who cause damage to the historic environment.

The assessment of what we protect and how we fund our shared and important historic assets has been the subject of much recent debate. Research¹ has indicated that public funding often serves as a crucial enabler, or catalyst, to widen investment in the historic environment. It is often the mechanism for inducing private sector resources and further unlocking the scale of economic benefits embodied in built heritage assets.

Creating incentives for the repair, maintenance, use and reuse of the historic environment can help restore and conserve our region's heritage assets; help create employment; safeguard distinctiveness; retain a traditional skills base; and stimulate regeneration, thereby assisting to retain both tangible and intangible cultural heritage. The following proposals outline a Historic Environment Fund which would have a four year life span to align with the Executive's budget period.

It is proposed that the Historic Environment Fund 2016-2020 will encompass four key strands: Heritage Research, Heritage Regeneration, Heritage Repair and Heritage Revival. The reasons we should provide this funding, and how we can promote capacity in each of the strands, are set out in this document.

¹ A number of research documents have borne this out including *The Study on the Economic Value of Northern Ireland's Historic Environment* published by DOE in June 2012. Some of these documents are listed in the attached bibliography.

The Fund's aims include:

Increasing understanding of our shared resource and facilitating excellence through **Heritage Research** schemes.

Strengthening local communities, supporting third sector capacity and regeneration initiatives through **Heritage Regeneration** schemes.

Encouraging sustainability and the preservation of the historic environment through helping to fund **Heritage Repairs**.

Promoting the social value of our historic environment and the innate contribution this can make to wellbeing through our **Heritage Revival** initiatives.

We anticipate that funding proposals will be judged against well defined criteria tailored to the specific objectives of each programme quadrant, against which applications will be assessed to help HED identify the best projects. Criteria will be published in advance to provide transparency and help applicants to design projects that fit the requirements of the funding streams. Applicants should seek to address their scheme's contribution to:

- Conservation and enhancement of the historic environment
- Economic impact - contribution to tourism and to supporting communities
- Economic impact - supporting the construction and associated industries
- Social benefits – creating broader and deeper understanding of our heritage
- Social benefits – enhancing public engagement with the historic environment

in line with the principles of principles of sustainable management of our historic environment [see below]. These will be among the key measures against which we propose that the priorities and outcomes will be assessed to have been achieved, progressed and reported.

The streams identified are deliberately designed to seek to capture the full range of potential support. Not all will necessarily be available in all years. Some smaller grants may also be best delivered through streamlined processes and/ or intermediaries. We will not be able to offer funding to every eligible project in need of financial assistance. We will review these priorities periodically to make sure that we are responding to the changing needs of the historic environment.

Sustainable Management of the Historic Environment

In parallel with the development of these funding proposals, HED is developing a framework for the sustainable management of our historic environment. We have identified six principles:

- The historic environment is a shared resource.
- Everyone will be able to participate in sustaining the historic environment.
- Understanding the significance of historic assets is vital.
- Historic assets will be managed to sustain their values*.
- Decisions about change must be reasonable, transparent and consistent.
- Documenting and learning from decisions is essential.

These six principles are in line with best practice in conservation management. The extent to which proposals adhere to the universal conservation principles of minimum intervention, maximum retention of historic fabric, clarity, reversibility and sustainability will also be a determining weight in decisions on funding of conservation works at heritage assets.

**values will include evidential value; historical value; aesthetic value and communal value.*

Q1: Do you agree with the overall approach to the Historic Environment Fund as outlined in section 1?

Q1a: Please provide any comments to explain your answer to Q1.

Q2: Do you agree or disagree with the proposed four key strands and their associated aims?

Q2a: Please provide any comments to explain your answer to Q2.

Q3: Do you agree or disagree with the proposals to include a framework for the Principles for the sustainable management of the historic environment to include the six identified Principles?

Q3a: Please provide any comments to explain your answer to Q3.



326 Seacoast Road Magilligan [before]



326 Seacoast Road Magilligan [after]

2 STRATEGIC AREAS FOR FUNDING

HISTORIC ENVIRONMENT FUND 2016-2020	
<p>HERITAGE RESEARCH UNDERSTANDING AND FACILITATING EXCELLENCE</p> <p>Historic Environment Research Fund</p> <p>Publications Fund</p> <p>University Fund</p> <p>Post-Excavation Fund</p> <p>Incubation-Innovation Fund</p> <p>Archaeological Investigation Funding</p> <p>Conservation Plan seed Funding</p> <p>Increasing understanding of our shared resource and facilitating excellence through Heritage Research schemes.</p>	<p>HERITAGE REGENERATION FACILITATING HERITAGE –LED REGENERATION</p> <p>Community Engagement - Seed Fund</p> <p>Council-enabled Management Agreements</p> <p>Council Engagement - Pilot Project Fund</p> <p>HAR (Heritage At Risk): Recording Acquisition Fund Holding Repairs Fund No economic value Fund Council owned structures Fund Exceptional Circumstances Fund</p> <p>Strengthening local communities by supporting third sector capacity and regeneration initiatives through Heritage Regeneration schemes.</p>
10-20% of fund	10-30% of fund
<p>HERITAGE REPAIR REWARDING AND ENCOURAGING BEST PRACTICE IN CONSERVATION</p> <p>Management Agreements</p> <p>Listed Buildings Funding Stream</p> <p>Historic Window Repair Funding Stream</p> <p>Thatched Buildings Funding Stream</p> <p>Small works Listed Places Of Worship Funding Stream</p> <p>Encouraging sustainability and best practice in conservation in the preservation of the historic environment through Heritage Repairs grants</p>	<p>HERITAGE REVIVAL PROMOTING SOCIAL VALUE OF HERITAGE</p> <p>Annual Heritage Awards</p> <p>Historic Environment Support Fund</p> <p>Skills development with training and education activities</p> <p>Heritage Schools Transport Fund</p> <p>Promoting the social value of our historic environment and the innate contribution this can make to wellbeing through Heritage Revival initiatives</p>
40-60% of fund	10-20% of fund

Q4: Do you agree or disagree with the percentages of funding allocated for each of the quadrants of the Historic Environment Fund?

Q4a: Please provide any comments to explain your answer to Q4.

3 HERITAGE RESEARCH

ACHIEVING EXCELLENCE

WHAT DO WE FUND?

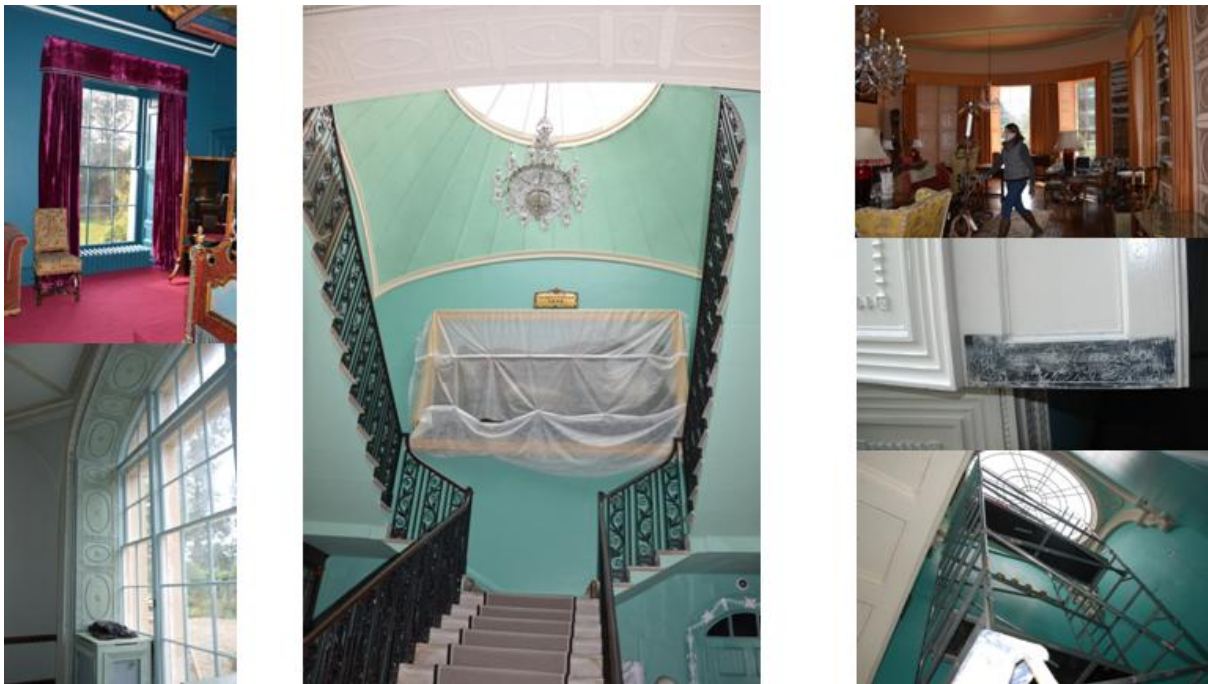
Historic Environment Division [HED] will offer funding for research.

WHY DO WE FUND IT?

We work with others to develop an increased understanding of our shared historic environment, to develop innovative ways to protect it from harm and to enrich skills and expertise to help care for it.

HOW CAN WE DISTRIBUTE THIS FUND?

- HISTORIC ENVIRONMENT RESEARCH FUND
- PUBLICATIONS FUND
- UNIVERSITY FUND
- POST EXCAVATION FUND
- INCUBATION-INNOVATION FUND
- ARCHAEOLOGICAL INVESTIGATION FUNDING
- CONSERVATION PLAN SEED FUNDING



Conservation works at Mount Stewart

HISTORIC ENVIRONMENT RESEARCH

A funding programme for research proposals. Working with our partners in District Councils, industry and the construction sector we will develop a framework for research and development funding in 2016, to allow for proposals under this heading in the remaining years of the Fund.

PUBLICATIONS FUND

A small funding programme to support publications on the historic environment which help to support the Historic Environment Division's aims.

UNIVERSITY FUND

An occasional scholarship programme to assist with research in the historic environment.

POST-EXCAVATION FUND

A funding programme to enable the creation or enhancement of completed archaeological archives.



Ballycopeland Windmill

INCUBATION-INNOVATION FUND

A funding programme for innovative and creative approaches to unlocking and realising the significant ongoing value of our historic environment.

ARCHAEOLOGICAL INVESTIGATION FUNDING

A funding programme for archaeological investigations. This stream will consider a range of proposals for investigation ranging from survey to excavation. Research-based proposals are welcome; so too are applications from non-profit making bodies and individuals who find themselves having to fund archaeological investigations in order to comply with conditions or other requirements within the development planning process.

CONSERVATION PLAN SEED FUNDING

In recognition of the importance of conservation planning as key to ensuring long term benefits for public investment, HED will introduce a small funding scheme to assist with the preparation of conservation plans. Any award will be commensurate with the complexity of the heritage asset.

Q5: Do you agree or disagree with the proposed list of proposed funding streams under the outcomes of a Heritage Research funding stream?

Q5a: Please provide any comments to explain your answer to Q5.

4 HERITAGE REGENERATION

PROMOTING REUSE- BENEFITTING THE COMMUNITY

WHAT DO WE FUND?

HED will offer funding to help deliver tangible benefits to local communities and local economies.

WHY DO WE FUND IT?

Heritage can play a key role in regeneration, reinforcing a sense of community, making an important contribution to the local economy and acting as a catalyst for improvements to the wider area. Encouraging participation in and inviting engagement with grassroots [community], local authority and regional levels will help to broaden the awareness of economic, social and environmental impacts of best practice.

A capacity building fund with District Councils will help raise awareness across the region. Through partnership funding, strategic support mechanisms will be enabled for third sector organisations and councils, to assist in our efforts to reduce the numbers of Heritage at Risk assets.

HOW CAN WE DISTRIBUTE THIS FUND?

COMMUNITY ENGAGEMENT – SEED FUNDING
 COUNCIL-ENABLED MANAGEMENT AGREEMENTS
 COUNCIL ENGAGEMENT - PILOT PROJECT FUND
 HERITAGE AT RISK [HAR] RECORDING
 HAR ACQUISITION FUND
 HAR HOLDING REPAIRS FUND
 HAR OF NO ECONOMIC VALUE FUND
 HAR COUNCIL OWNED STRUCTURES FUND
 HAR EXCEPTIONAL CIRCUMSTANCES FUND



Montalto stableyard



General Cole & Town Hall Enniskillen



Carricklee stableyard



Ballytrustan Graveyard

COMMUNITY ENGAGEMENT SEED FUNDING

Funding for capacity building projects for community-led proposals [including by Trusts] which help divisional aims.

COUNCIL-ENABLED MANAGEMENT AGREEMENTS

Funding for capacity building for projects which are council-led and are for works of repair and interpretation at scheduled monuments which often represent some of the most significant archaeological sites in our landscape. The sense of place and potential they have to aid in community regeneration can be unlocked with funding under this stream

COUNCIL ENGAGEMENT - PILOT PROJECT FUND

Funding for strategic capacity building projects from District Councils for proposals which help to deliver divisional aims. Proposals may be from single Councils or combined across Council areas.

HERITAGE AT RISK [HAR] RECORDING

Funding to continue the well-established work to record and encourage action to address Heritage at Risk [HAR] formerly BHARNI.

HAR ACQUISITION FUND

Funds to support the acquisition of heritage at risk by BPTs/similar charitable bodies. In addition to 'stand alone' BPTs, BPTs which are developed by District Councils will be allowed to apply for acquisition funding for listed buildings at risk. The funding will include any expert advice needed by the Department to access proposals.

HAR HOLDING REPAIRS FUND

A funding programme for holding repairs - targeted at heritage at risk [HAR] - for Building Preservation Trusts and other similar charitable bodies. This funding stream will be to make structures 'weather tight', and to encourage interim occupancy. BPTs

will be able to apply for a maximum 50% of eligible costs - to make the structure watertight.



Carlisle Memorial - before emergency works

HAR OF NO ECONOMIC VALUE FUND

Funding stream for those buildings/ structures on the HAR register with no economic use – e.g. -follies, estate structures with no potential for habitation, bridges, mortuary chapels, etc.



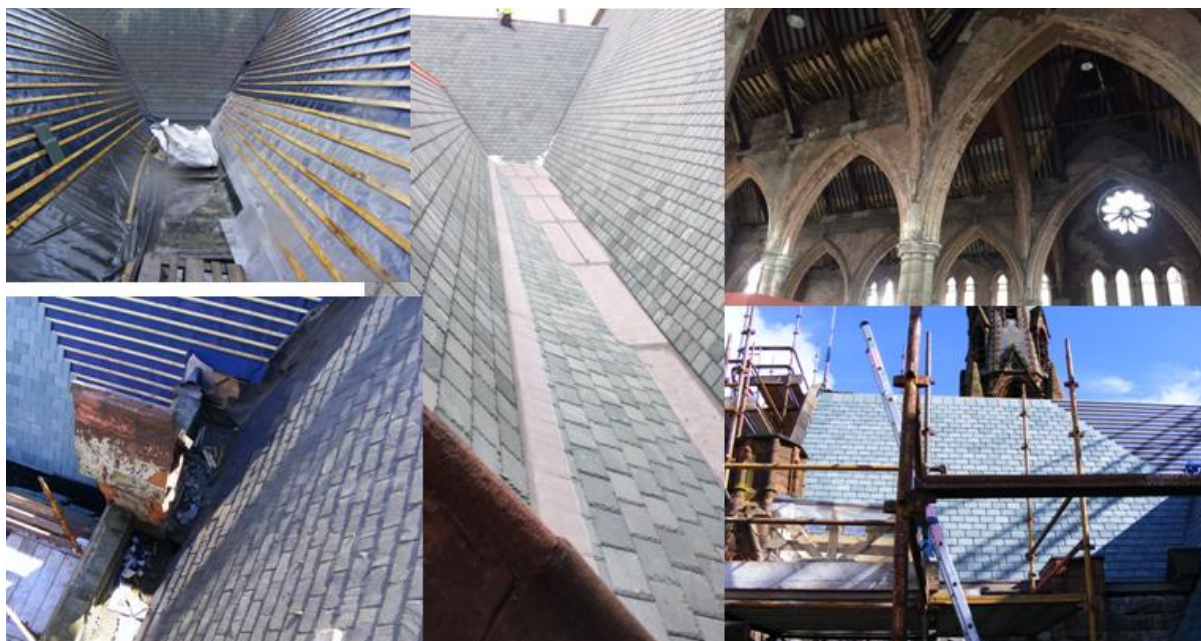
Cenotaph, Ballyquin Road, Limavady

HAR COUNCIL OWNED STRUCTURES FUND

Funding stream for repair projects for listed buildings on the HAR register which are in District Council ownership. Listed buildings which are not at risk in District Council ownership will no longer be eligible for grant aid for repairs.

HAR EXCEPTIONAL CIRCUMSTANCES FUND

In exceptional circumstances, funding may be made available to support charities which it appears to the Department have among their principal objectives furthering the preservation, conservation and regeneration of historic buildings (Section 225 (2) of the Planning Act (NI) 2011), where a full business case demonstrates the need for additional public subsidy to allow a conservation project to progress. The building(s) must be listed, on the HAR register and assessed by HED as being in priority category A or B that is ‘at immediate risk of further rapid deterioration or loss of fabric’.



Carlisle Memorial after conservation works

Q6: Do you agree or disagree with the proposed list of proposed funding streams under the outcomes of a Heritage Regeneration funding stream?

Q6a: Please provide any comments to explain your answer to Q6.

5 HERITAGE REPAIR

REWARDING AND ENCOURAGING BEST PRACTICE IN CONSERVATION

WHAT DO WE FUND?

Proposals for assisting owners and custodians to repair and maintain their heritage assets, in turn helping to develop and sustain heritage skills and providing for greater public understanding of the historic environment.

WHY DO WE FUND IT?

HED recognises that extra costs apply to conservation works at heritage structures. Public funding often serves as a catalyst to widen investment in the historic environment and as a mechanism for unlocking the scale of economic benefits embodied in heritage assets. Traditional craft skills are an important part of our shared and vulnerable heritage and it is right that we should look to maintain them.

Poorly specified or badly executed work can be damaging to both character and performance and is expensive to rectify. Traditional skills training, mentoring and skills development will be a key focus in the assessment of Repair funding streams. When preparing an application, applicants will need consider how their project might contribute to increasing skills and providing opportunities for training and qualifications. Proposals should be proportionate to the scale and nature of the application. Large or longer term projects are likely to offer a greater range of opportunities, but small projects can still offer invaluable on the job experience. There may be scope for collaboration with district councils, CITB, HLF, local colleges or training providers to encourage apprentice type opportunities for encouraging the interest in heritage skills.

HOW CAN WE DISTRIBUTE THIS FUND?

MANAGEMENT AGREEMENTS FUNDING STREAM
 LISTED BUILDINGS FUNDING STREAM
 HISTORIC WINDOW REPAIR FUNDING STREAM
 THATCHED BUILDINGS FUNDING STREAM
 SMALL WORKS LISTED PLACES OF WORSHIP FUNDING STREAM

MANAGEMENT AGREEMENTS FOR WORKS AT SCHEDULED MONUMENTS

HED has historically funded a repairs programme at scheduled monuments which represent some of the most significant archaeological sites in our landscape. The sense of place and potential they have to aid in community regeneration can be unlocked with funding under this stream. Schemes to stabilise structures most at risk from further loss of historic material will be prioritised.



Ardkeen from the air



Kilbroney Old Church

LISTED BUILDINGS FUNDING STREAM

Recognising the need for essential repairs at listed buildings, a funding stream for all grades of secular buildings and the higher grades of churches at A and B+ grade will open. Funding is proposed to be awarded at 20% for all eligible items which are deemed to be urgently necessary, with the exception of urgent repairs to historic windows which is provided at an enhanced rate of 35% [see below].



The Manse at Great James Street Derry

HISTORIC WINDOW REPAIR FUNDING STREAM

Recognising the particular importance of historic windows and historic glass, the rate of funding for repair works to windows will be increased from 20% to 35%, to reflect the difference in cost between standard repairs/replacement. This level of aid will not be available for new windows.



Repairs to window and linings Mount Stewart

THATCHED BUILDINGS FUNDING STREAM

Recognising the distinctiveness, fragility and rarity of thatch in an era of increased levels of rainfall and climate change, it is proposed that the rate of grant-aid for thatch and repairs to roof structures of thatched buildings will be increased to 80%, with the focus on the use of locally grown and indigenous thatch materials and methods to seek to encourage the retention of thatching as a heritage skill at risk of becoming obsolete.



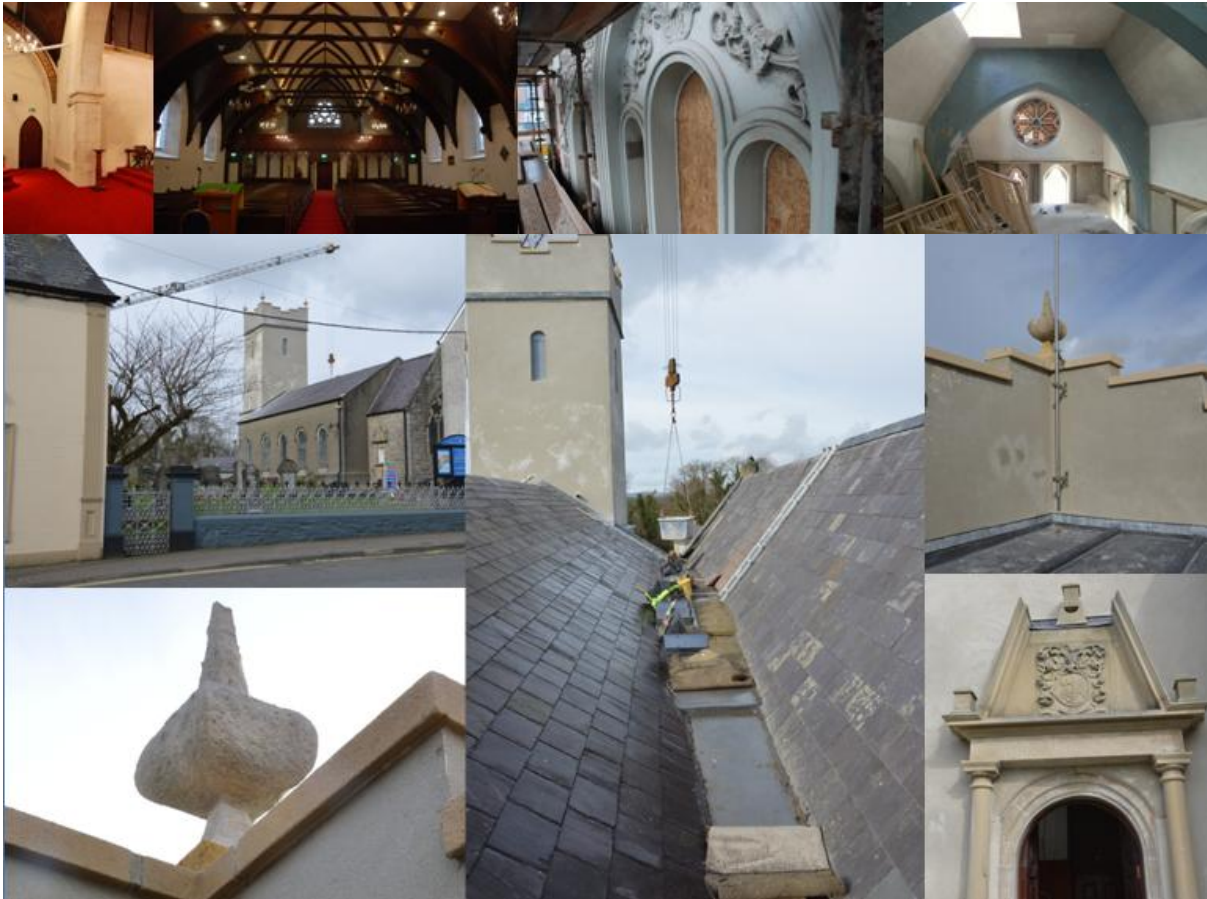
Thatching at Dan Winter's cottage

SMALL WORKS LISTED PLACES OF WORSHIP FUND

Recognising that DOE funding for the lower grades of listed places of worship [LPOWs] at grades B, B1 and B2 has never before been made available, HED will address the issue of climate change and maintenance by introducing a Small Works Programme for LPOWs currently excluded. It is proposed as a first step to working proactively with the custodians of these key listed buildings which make such a valuable contribution to the community.

Q7: Do you agree or disagree with the proposed list of proposed funding streams under the outcomes of a Heritage Repair funding stream?

Q7a: Please provide any comments to explain your answer to Q7.



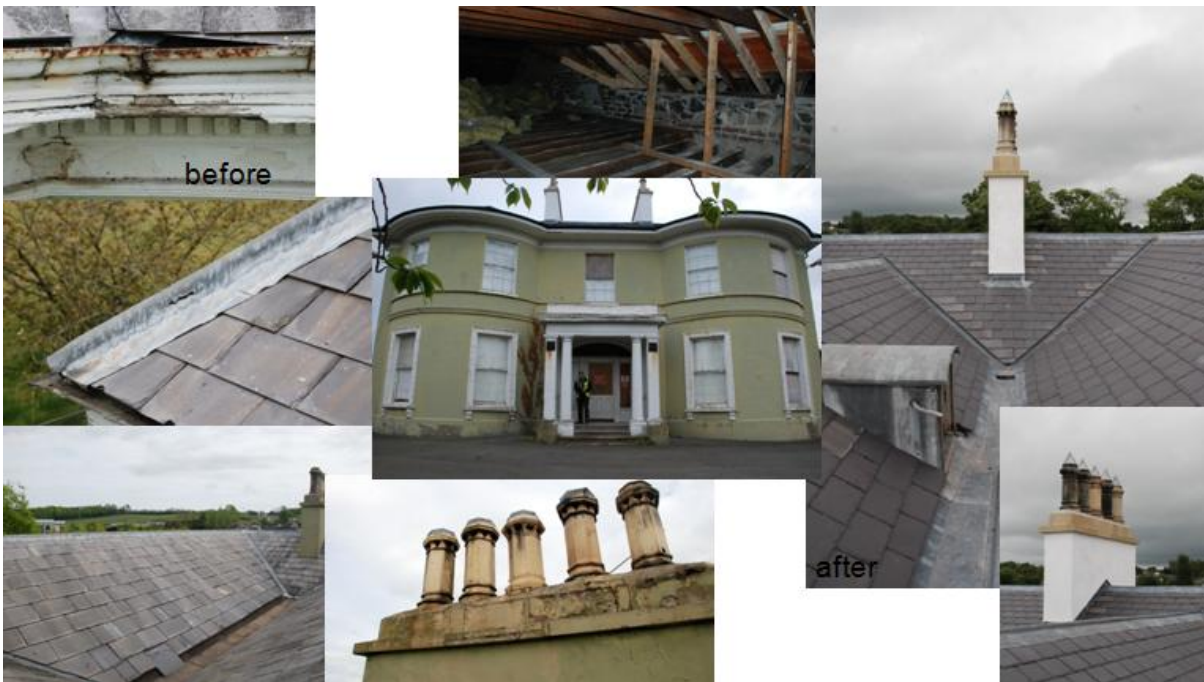
Derg Parish Church Castleberg – roof repairs



1st Presbyterian Church Bangor – stone repairs



Bishop's Palace Armagh – repairs to interior plasterwork



The Steeple Antrim – repairs to roof and chimneys

6 HERITAGE REVIVAL

PROMOTING THE SOCIAL VALUE OF HERITAGE

WHAT DO WE FUND?

Incentives and rewards for owners, custodians and guardians that demonstrate commitment to the division's aim 'to support and sustain vibrant communities and a strong economy through realising the significant, ongoing value of our historic environment'.

WHY DO WE FUND IT?

The historic environment is a shared resource. We work with others to help promote our shared historic environment.

HOW CAN WE DISTRIBUTE THIS FUND?

ANNUAL HERITAGE AWARDS

HISTORIC ENVIRONMENT SUPPORT FUND

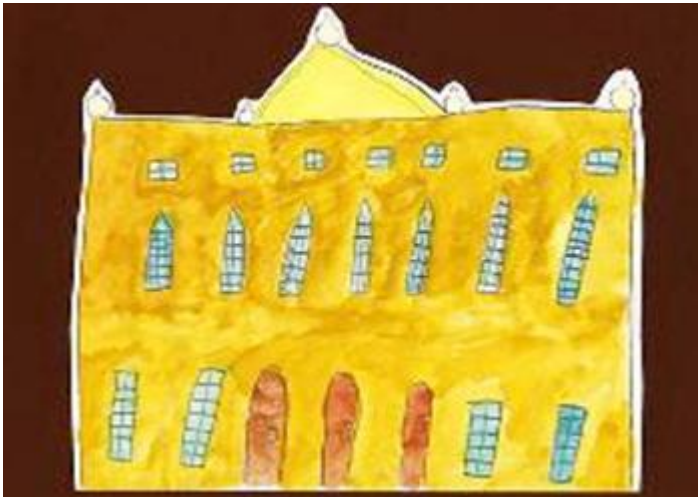
SKILLS DEVELOPMENT WITH TRAINING AND EDUCATION ACTIVITIES

HERITAGE SCHOOLS TRANSPORT FUND



ANNUAL HERITAGE AWARDS

HED will undertake to recognise best practice and seek to raise standards across the sector. Awards will be made for schemes which demonstrate best conservation practice under the possible headings of: HERITAGE LED DEVELOPMENT; COMMUNITIES' AWARDS; COUNCILS' AWARDS; OWNERS' AWARDS; STUDENT ARCHAEOLOGY AWARD; STUDENT ARCHITECTURE AWARD; HERITAGE INNOVATION AND INITIATIVE AWARD[s] etc which underpin our aims.



HISTORIC ENVIRONMENT SUPPORT FUND

HED will provide a fund to support diverse projects such as providing grants to events, training, travel and study costs associated with supporting community outreach. The benefits of the project should align with HED's aim to support and sustain vibrant communities and a strong economy through realising the significant, ongoing value of our historic environment.

SKILLS DEVELOPMENT WITH TRAINING AND EDUCATION ACTIVITIES

HED will provide a fund to support diverse projects such as providing support for training, travel and study costs associated with the use of traditional materials and skills. The benefits of the project should align with HED's aim to support and sustain vibrant communities and a strong economy through realising the significant, ongoing value of our historic environment.



HERITAGE SCHOOLS TRANSPORT FUND

HED will provide a fund to support travel costs associated with the Heritage Schools initiative to fund coach trips to HED and NT sites for school children.



Q8: Do you agree or disagree with the proposed list of proposed funding streams under the outcomes a Heritage Revival funding stream?

Q8a: Please provide any comments to explain your answer to Q8.

7 SUPPLEMENTARY MATTERS

ADDITIONAL GENERAL INFORMATION FOR THE PROCESSING AND ADMINISTRATION OF HISTORIC ENVIRONMENT DIVISION [HED] ASSISTANCE



Killymoon Castle- roof repair works

Restrictions to Fund - retention of capping, processing and batching

As an effective financial management system, a two-stage management system for the high value schemes will be introduced to determine eligibility and demand. Capping will be retained and capped at £50k per scheme. This will be subject to periodic review and subject to funding availability. Batching of applications for high-value schemes will be considered three times a year [April, August, December] to assist to profile uptake and possible outturn to help financial forecasting and avoid over commitment. Proposals will be competitively scored and weighted against agreed criteria and priorities. The benefits of the project[s] should align with HED's aim **to support and sustain vibrant communities and a strong economy through realising the significant, ongoing value of our historic environment.**

HED will also consider how funding through the Historic Environment Fund can be most appropriately aligned with government's financial years, including whether (on occasions) it is appropriate to break larger schemes down into smaller elements and fund these individually.

Q9: Do you agree or disagree with the proposed restrictions to the fund-retention of capping, processing, batching and prioritisation aligned to financial forecasting?

Q9a: Please provide any comments to explain your answer to Q9 with regard to retention and level of capping; processing, batching of applications and prioritisation aligned to financial forecasting.

Dispersal of Fund

In order to build capacity across the region, applicants will be asked for details of all other government funding received in the previous three years [including Challenge Funding], in order to ensure the maximum dispersal of funding and avoid 'cold spots' of funding take up.

Q10: Do you agree or disagree with the proposal to request details of other sources of recent funding from applicants to avoid 'cold spots' of funding?

Q10a: Please provide any comments to explain your answer to Q10.

Priorities in the event of restricted funding

In the event of a restricted funding situation for heritage repairs, HED will give priority to:

- structures on the HAR register*;
- thatched buildings;
- those applicants qualifying for enhanced rate of grant [applicants in receipt of specified means tested state benefits are eligible for 90% grant aid];
- Structures on the World Monuments at Risk Register.

*The owners of buildings on the HAR register, as part of their application, will have to demonstrate that measures to address water damage by, for example, preventing water ingress and /or securing wall heads etc through temporary means, have been undertaken in order to safeguard scarce public funding.

Q11: Do you agree or disagree with the proposal to prioritise the four categories above in the event of restricted funding?

Q11a: Please provide any comments to explain your answer to Q11.

Q12: Do you agree or disagree with the proposal to require proof of temporary measures to be undertaken to address water ingress for the owners of buildings on the HAR register?

Q12a: Please provide any comments to explain your answer to Q12.



Conservation works at Shiel's Housing Killough

Funding Maintenance plans

In recognition of the importance of maintenance as key to ensuring long term benefits for public investment, Historic Environment Division [HED] will introduce as a condition on all offers for listed buildings over £20,000, the submission of an appropriate maintenance plan. The preparation of these plans may be an eligible cost, and will be limited to 75% of the costs, up to a maximum of £200.

A condition of any future offer will be that the maintenance detailed in the plan has been carried out.

Q13: Do you agree or disagree with the proposal to fund maintenance plans?

Q13a: Please provide any comments to explain your answer to Q13.

Retention of enhanced levels of grant aid to owners in receipt of qualifying benefit, exclusions and claw back

The enhanced rate of support for eligible applicants [applicants in receipt of specified means tested state benefits are eligible for 90% grant aid] for listed building support will be maintained at 90% of eligible costs and capped at £50k. Current exclusions for listed building support will remain. Government and public bodies, Housing Associations funded by public monies and large commercial organisations, including but not exclusively limited to, financial institutions and multi-national companies, are excluded from the scheme.

In order to operate a claw back facility it is proposed to apply a percentage claw back above a limit on listed building repair schemes where funding exceeds £30k, and above the 20% contribution. Consideration would have to be given on a case by case basis, to avoid disproportionate effort/cost.

Gainshare will be applied in circumstances where the Department has provided funding towards the purchase of a listed building at risk, under Article 225 (2) of the Planning (NI) Act 2011. Consideration may be given to permitting such funding to be 'revolved' by the charity towards the purchase of another building at risk, subject to Departmental approval of a robust business case, in advance.

Q14: Do you agree or disagree with the proposal to retain the enhanced level of grant aid for owners in receipt of qualifying benefit and the proposed level of capping?

Q14a: Please provide any comments to explain your answer to Q14.

Q15: Do you agree or disagree with the proposal to continue to exclude Government and public bodies, Housing Associations funded by public monies and large commercial organisations, including but not exclusively limited to, financial institutions and multi-national companies?

Q15a: Please provide any comments to explain your answer to Q15.

Q16: Do you agree or disagree with the proposal to include a claw back clause for the repayment of the funding in the event of the failure of a scheme to progress through acquisition funding or in the event of sale of a building funded through an enhanced scheme [90% funding]?

Q16a: Please provide any comments to explain your answer to Q16.

Funding Condition Reports and Forward Plans

Where there is a history of applications for one heritage asset or for assets in common ownership, or where phasing is proposed, applications must be based on a full condition report and forward plan outlining the future development of the property or properties over the next 5 years. The report, prepared by an accredited conservation professional, should identify those works that are urgent, and those likely to be required in the medium and long-term.

The preparation of these documents will be an eligible cost. Funding will be available for up to 75% of the total cost, and will be capped at £1K. This will be paid on commencement of the first work phase.

Q17: Do you agree or disagree with the proposal to continue to fund Condition Reports and Forward Plans?

Q17a: Please provide any comments to explain your answer to Q17.

Requirement to appoint accredited conservation professionals on funding building schemes over value of £10K

As a condition of support, where the total cost of eligible work is estimated at £10,000 or more (including fees and VAT), applicants will be required to appoint an accredited conservation professional to specify and oversee the works. This will be introduced in 2017, to facilitate applications for accreditation to be achieved by the relevant professions.

Q18: Do you agree or disagree with the proposal to requirement the appointment of accredited conservation professionals on funding schemes over value of £10K?

Q18a: Please provide any comments to explain your answer to Q18.

Publicity and outreach of schemes

As a condition of support, all recipients of suitable offers will be required to agree to an appropriate level of public access for five years from the date of the final payment being made by Historic Environment Division [HED], such as European Heritage Open Days.

Additional publicity including description of proposals, photographs and information including financial award[s] will be available for web dissemination and /or printed promotional literature.

Q19: Do you agree or disagree with the proposal to require all recipients of suitable offers will be required to agree to an appropriate level of public access for 5 years from the date of the final payment?

Q19a: Please provide any comments to explain your answer to Q19.

Q20: Do you agree or disagree with the proposal to require all recipients of suitable offers to facilitate publicity of award of funding including description of proposals, photographs and information including financial award[s]. All to be available for web dissemination and /or printed promotional literature?

Q20a: Please provide any comments to explain your answer to Q20.







BIBLIOGRAPHY

The BURRA Charter, The Australian ICOMOS, *Charter for Places of Cultural Significance*, 1981 revised 1999

European Landscape Convention, Florence, 20/10/2000

The Charter of Krakow *Principles for Conservation and restoration of Built Heritage*, 2000

Budapest *Declaration on World Heritage* June 2002

UNESCO *Convention for the Safeguarding of the Intangible Cultural Heritage* Paris, 17th October 2003

ICOMOS *International Cultural Tourism Charter*, December 2003

ICOMOS *Charter on the Principles for the Analysis, Conservation and Structural Restoration of Architectural Heritage*, Zimbabwe, October 2003

ICOMOS *The Convention for the Safeguarding of the Intangible Cultural Heritage*, 2003

Council Of Europe *Faro Framework Convention on the Value of Cultural Heritage for Society*. Council of Europe, 2003

ICOMOS *A Cultural Heritage Manifesto*, October 2015

English Heritage (2007). *Valuing Our Heritage: The Case for Future Investment in the Historic Environment*.

English Heritage (2006) *Capturing the Public Value of Heritage*. May 2006

English Heritage (2008) *Conservation Principles, Policies and Guidance*. April 2008

English Heritage (2013) *Constructive Conservation Sustainable Growth for Historic Places*

English Heritage (2013) *Heritage Works: The use of Historic Buildings in Regeneration*. Report prepared in association with the British Property Federation, Deloitte Real Estate and RICS

CADW *Conservation Principles Policy and Guidance for the sustainable management of the Historic Environment in Wales* 2011

National Heritage Training Group. *Traditional Building Craft skills- measuring the need, addressing the issue*. NHTG London 2008

UNESCO (2014) *The Power of Culture for Development*

- Heritage lottery Fund (2010) *Heritage in the 2020 knowledge Economy*. A report for the Heritage Lottery Fund
- Heritage lottery Fund (2012) *Values and Benefits of Heritage*. A research review. November 2012
- NIAO (2011) *Safeguarding Northern Ireland's Listed Buildings* March 2011
- Northern Ireland Assembly Public Accounts Committee (2012) *Inquiry into saving Northern Ireland's Listed Buildings* May 2012
- The Economic Impact of the UK Heritage Economy. Report prepared for Heritage Lottery Fund by Oxford Economics (2013)
- ECORYS (2014) *Baseline Survey on the Condition of Listed Buildings 2013-14*. Report commissioned by NIEA
- EFTEC and RSM (2012) *Study on the Economic Value of Northern Ireland's Historic Environment*. Full Report , June 2012
- EFTEC and RSM (2012) *Study on the Economic Value of Northern Ireland's Historic Environment*. Summary Report, June 2012
- ECOTEC, (2008) *Economic Impact of the Historic Environment in Scotland*
- ECOTEC (2010) *Valuing the Welsh Historic Environment*, September 2010
- HEACS (Historic Environment Advisory Council for Scotland). *Report and Recommendations on the Economic Impact of the Historic Environment in Scotland*. February 2009
- ECORYS and Fitzpatrick (2012), *Economic Value of Ireland's Historic Environment*. Report to the Heritage Council 2012
- Heritage Council (2015) *Heritage Manifesto A Strategic Investment Programme for People and Place* 2015
- Heritage Council (2014) *Assessment of Possible Fiscal Incentives in relation to the Built Heritage in Ireland's Towns*, Peter Bacon and Associates, January 2014
- Historic Scotland (2013) *Impact of Historic Environment Grant Investment* Jura Consultants, October 2013

ANNEX: LIST OF QUESTIONS REGARDING THE HISTORIC ENVIRONMENT FUND

Q1: Do you agree with the overall approach to the Historic Environment Fund as outlined in section 1?

Q1a: Please provide any comments to explain your answer to Q1.

Q2: Do you agree or disagree with the proposed four key strands and their associated aims?

Q2a: Please provide any comments to explain your answer to Q2.

Q3: Do you agree or disagree with the proposals to include a framework for the Principles for the sustainable management of the historic environment to include the six identified Principles?

Q3a: Please provide any comments to explain your answer to Q3.

Q4: Do you agree or disagree with the percentages of funding allocated for each of the quadrants of the Historic Environment Fund?

Q4a: Please provide any comments to explain your answer to Q4.

Q5: Do you agree or disagree with the proposed list of proposed funding streams under the outcomes of a Heritage Research funding stream?

Q5a: Please provide any comments to explain your answer to Q5.

Q6: Do you agree or disagree with the proposed list of proposed funding streams under the outcomes of a Heritage Regeneration funding stream?

Q6a: Please provide any comments to explain your answer to Q6.

Q7: Do you agree or disagree with the proposed list of proposed funding streams under the outcomes of a Heritage Repair funding stream?

Q7a: Please provide any comments to explain your answer to Q7.

Q8: Do you agree or disagree with the proposed list of proposed funding streams under the outcomes a Heritage Revival funding stream?

Q8a: Please provide any comments to explain your answer to Q8.

Q9: Do you agree or disagree with the proposed restrictions to the fund- retention of capping, processing, batching and prioritisation aligned to financial forecasting?

Q9a: Please provide any comments to explain your answer to Q9 with regard to retention and level of capping; processing, batching of applications and prioritisation aligned to financial forecasting.

Q10: Do you agree or disagree with the proposal to request details of other sources of recent funding from applicants to avoid ‘cold spots’ of funding?

Q10a: Please provide any comments to explain your answer to Q10.

Q11: Do you agree or disagree with the proposal to prioritise the four categories set out in the event of restricted funding?

Q11a: Please provide any comments to explain your answer to Q11.

Q12: Do you agree or disagree with the proposal to require proof of temporary measures to be undertaken to address water ingress for the owners of buildings on the HAR register?

Q12a: Please provide any comments to explain your answer to Q12.

Q13: Do you agree or disagree with the proposal to fund maintenance plans?

Q13a: Please provide any comments to explain your answer to Q13.

Q14: Do you agree or disagree with the proposal to retain the enhanced level of grant aid for owners in receipt of qualifying benefit?

Q14a: Please provide any comments to explain your answer to Q14.

Q15: Do you agree or disagree with the proposal to continue to exclude Government and public bodies, Housing Associations funded by public monies and large commercial organisations, including but not exclusively limited to, financial institutions and multi-national companies?

Q15a: Please provide any comments to explain your answer to Q15.

Q16: Do you agree or disagree with the proposal to continue to include a claw back clause for the repayment of the funding in the event of the failure of a scheme to progress through acquisition funding or in the event of sale of a building funded through an enhanced scheme [90% funding]?

Q16a: Please provide any comments to explain your answer to Q16.

Q17: Do you agree or disagree with the proposal to continue to fund Condition Reports and Forward Plans?

Q17a: Please provide any comments to explain your answer to Q17.

Q18: Do you agree or disagree with the proposal to requirement the appointment of accredited conservation professionals on funding schemes over value of £10K?

Q18a: Please provide any comments to explain your answer to Q18.

Q19: Do you agree or disagree with the proposal to require all recipients of suitable offers will be required to agree to an appropriate level of public access for 5 years from the date of the final payment?

Q19a: Please provide any comments to explain your answer to Q19.

Q20: Do you agree or disagree with the proposal to require all recipients of suitable offers to facilitate publicity of award of funding including description of proposals, photographs and information including financial award[s]. All to be available for web dissemination and /or printed promotional literature?

Q20a: Please provide any comments to explain your answer to Q20.

Do you have any further comments on any of the issues raised in this document or are there any other important issues that you feel have not been covered?



Tievealough Abbey interior east window before conservation works. The Abbey was conserved through a management agreement with a local community group 'Friends of Tievealough Abbey'.



Tievealough Abbey interior east window after conservation works. The Abbey was conserved through a management agreement with a local community group 'Friends of Tievealough Abbey'.

**Department of the Environment
Historic Environment Division
6th Floor
Causeway Exchange
1-7 Bedford Street
Belfast
BT2 7EG**

Tel: 028 9082 3177 / 028 9082 3126

Email: Historicenvironmentenquiries@doeni.gov.uk